



Download Instructions

## LogTag Temperature Recorder

**If you do not return the temperature report, you have to bear the risks yourself in case of deviations from the specification.**

The temperature recorder attached to this shipment is used for recording the temperature progress during the complete transport.

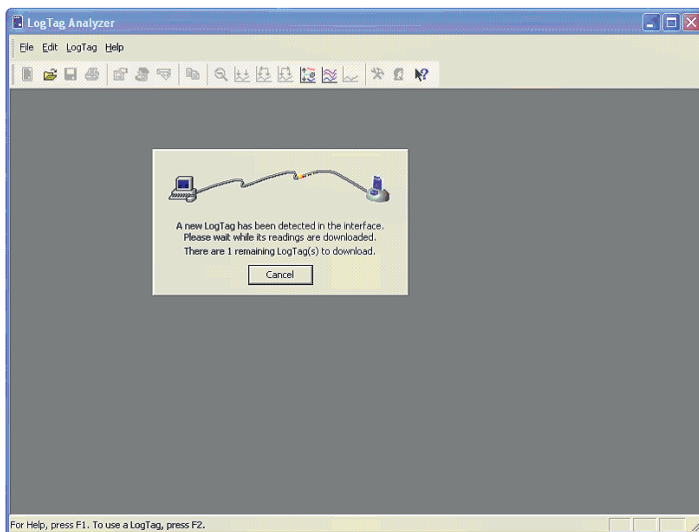
To read the temperature recorder, the USB LogTag interface and the “LogTag Analyzer” software (download on [www.delo.de/temperature\\_recorder](http://www.delo.de/temperature_recorder)) are required.

We would ask you to operate the temperature recorder as follows:

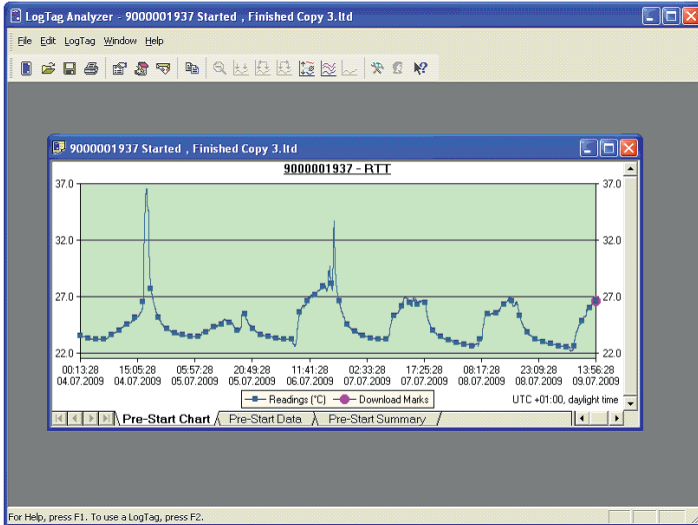
1. Start the LogTag Analyzer software.
2. Plug the LogTag recorder into the LogTag interface.



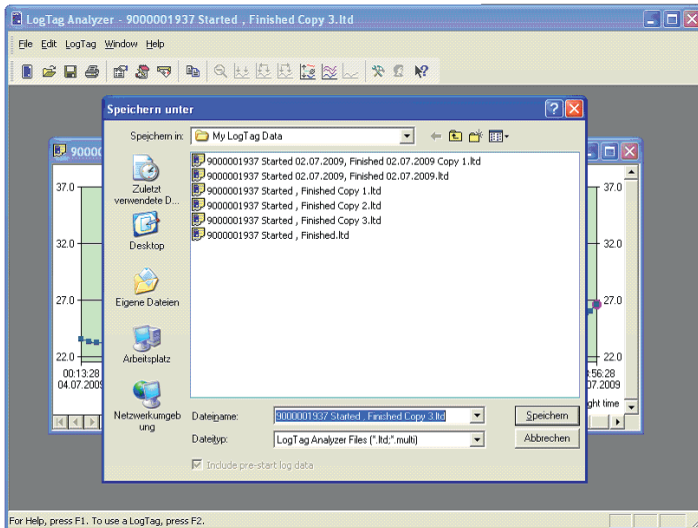
3. The software automatically recognizes the plugged-in recorder.



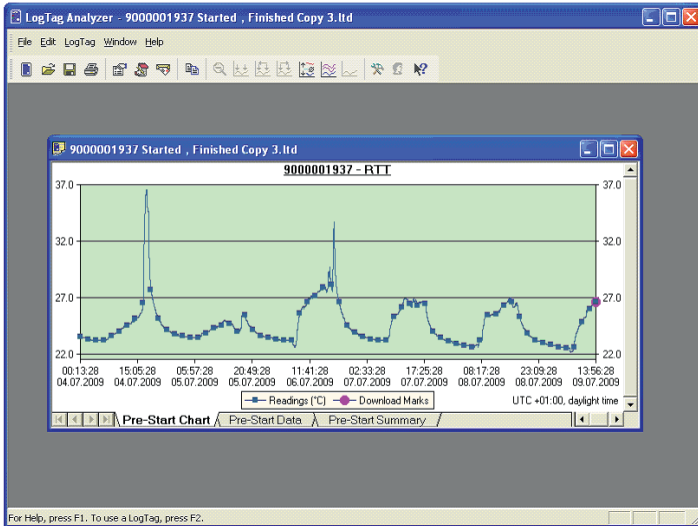
4. After the software has successfully read the data, the temperature progress is displayed on the screen.



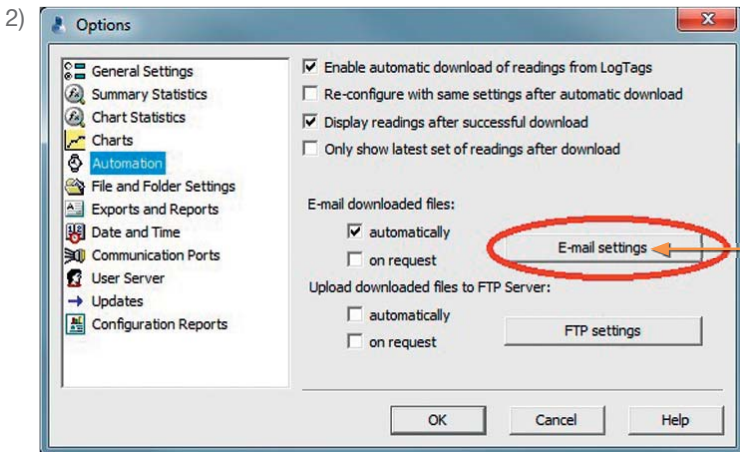
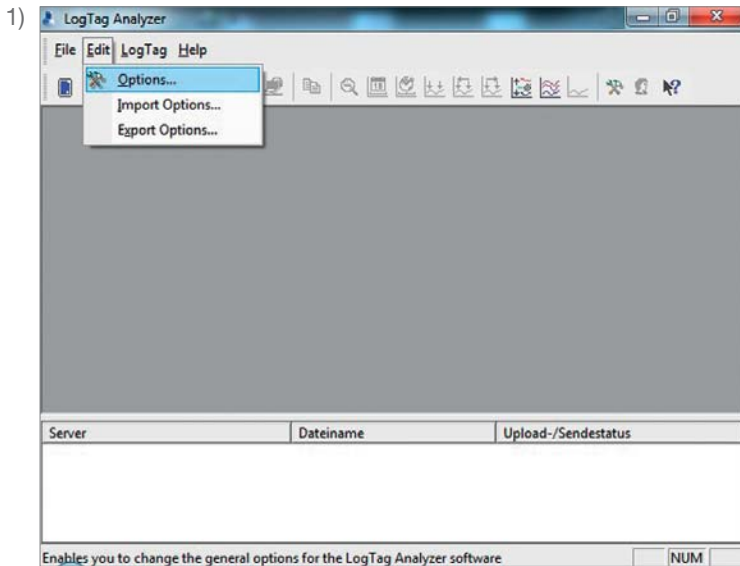
5. The data can be saved locally. Give the file a name dedicated to the delivery to save it (e. g. order number).

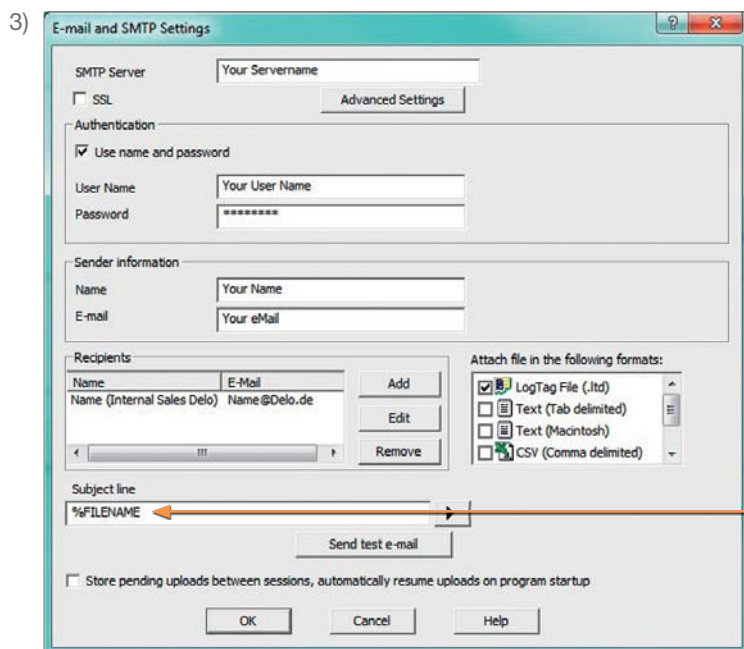


- The installed e-mail client is started by clicking on the “Send Mail” button and a copy of the temperature data read is attached to an e-mail.

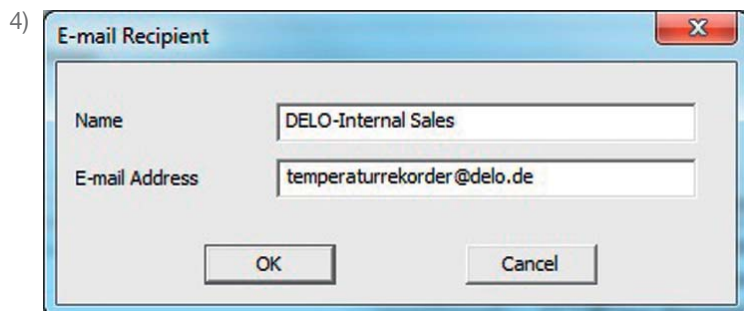


- Send the saved file by e-mail to the responsible person in the Internal Sales at DELO or fax it to +49 8193 9900-144. You can return the saved data to DELO automatically. The temperature data are automatically e-mailed after download. For this purpose, you have to enter your server settings and the e-mail address ***temperaturrekorder@DELO.de***. If necessary, contact your IT Department. Use the specifications of the instructions (red marking) for the correct file designation.

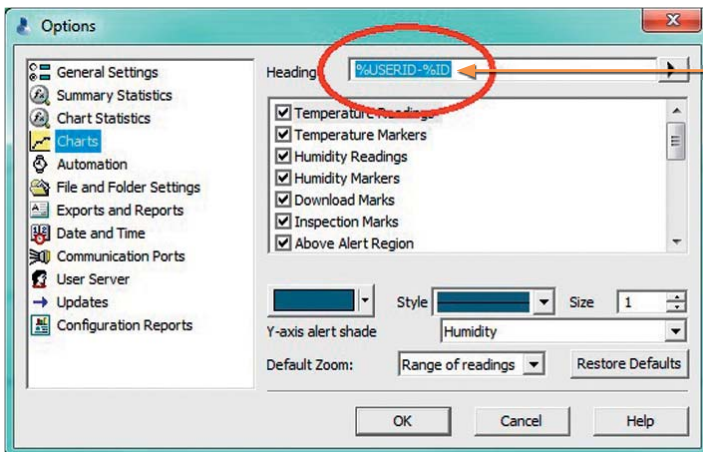




Subject line:  
%FILENAME

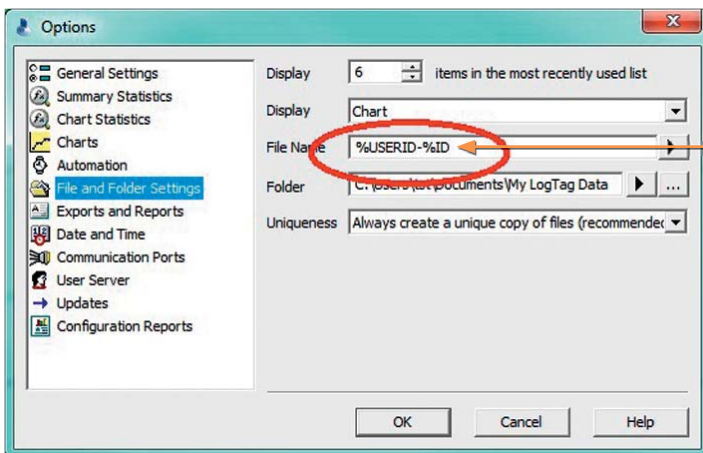


5)



Menu selection  
Diagrams, headline:  
%USERID-%ID

6)



Menu selection  
File and directory  
options, file name:  
%USERID-%ID

## 8. Trouble-shooting

If it is not possible to establish a connection for reading, please check the connection to your PC and the connection between LogTag recorder and docking station.

- Is the USB cable connected?
- Is the LogTag recorder correctly plugged in the docking station?
- If still no temperature curve is shown, unplug the temperature recorder from the docking station and plug it in again.

# CONTACT

## DELO Industrial Adhesives

- ▶ **Germany** · Windach/Munich (Headquarters) · Phone +49 8193 9900-0 · [info@DELO.de](mailto:info@DELO.de) · [www.DELO.de](http://www.DELO.de)
- ▶ **China** · Shanghai · Phone +86 21 2898 6569 · [china@DELO-adhesives.com](mailto:china@DELO-adhesives.com) · [www.DELO-adhesives.com/cn](http://www.DELO-adhesives.com/cn)
- ▶ **Malaysia** · Kuala Lumpur · Phone +65 6807 0800 · [malaysia@DELO-adhesives.com](mailto:malaysia@DELO-adhesives.com) · [www.DELO-adhesives.com/en](http://www.DELO-adhesives.com/en)
- ▶ **Singapore** · Phone +65 6807 0800 · [singapore@DELO-adhesives.com](mailto:singapore@DELO-adhesives.com) · [www.DELO-adhesives.com/en](http://www.DELO-adhesives.com/en)
- ▶ **South Korea** · Seoul · Phone +82 31 450 3038 · [korea@DELO-adhesives.com](mailto:korea@DELO-adhesives.com) · [www.DELO-adhesives.com/en](http://www.DELO-adhesives.com/en)
- ▶ **Taiwan** · Taipei · Phone +886 2 6639 8248 · [taiwan@DELO-adhesives.com](mailto:taiwan@DELO-adhesives.com) · [www.DELO-adhesives.com/cn](http://www.DELO-adhesives.com/cn)
- ▶ **USA** · Sudbury, MA · Phone +1 978 254 5275 · [usa@DELO-adhesives.com](mailto:usa@DELO-adhesives.com) · [www.DELO-adhesives.com/us](http://www.DELO-adhesives.com/us)

The data and information provided are based on tests performed under laboratory conditions. Reliable information about the behavior of the product under practical conditions and its suitability for a specific purpose cannot be concluded from this. It is the customer's responsibility to test the suitability of a product for the intended purpose by considering all specific requirements and by applying standards the customer deems suitable (e. g. DIN 2304-1). Type, physical and chemical properties of the materials to be processed with the product, as well as all actual influences occurring during transport, storage, processing and use, may cause deviations in the behavior of the product compared to its behavior under laboratory conditions. All data provided are typical average values or uniquely determined parameters measured under laboratory conditions. The data and information provided are therefore no guarantee for specific product properties or the suitability of the product for a specific purpose. Nothing contained herein shall be construed to indicate the non-existence of any relevant patents or to constitute a permission, encouragement or recommendation to practice any development covered by any patents, without permission of the owner of this patent. All products provided by DELO are subject to DELO's General Terms of Business. Verbal ancillary agreements are deemed not to exist.

© DELO – This document including any and all parts is protected by copyright. Any use not expressly permitted by the Urheberrechtsgesetz (German Copyright Act) shall require DELO's written consent. This shall apply without limitation to reproductions, duplications, disseminations, adaptations, translations and microfilms as well as to the recording, processing, duplication and/or dissemination by electronic means.

03/17

Adhesives

Dispensing

Curing

Consulting

**DELO**