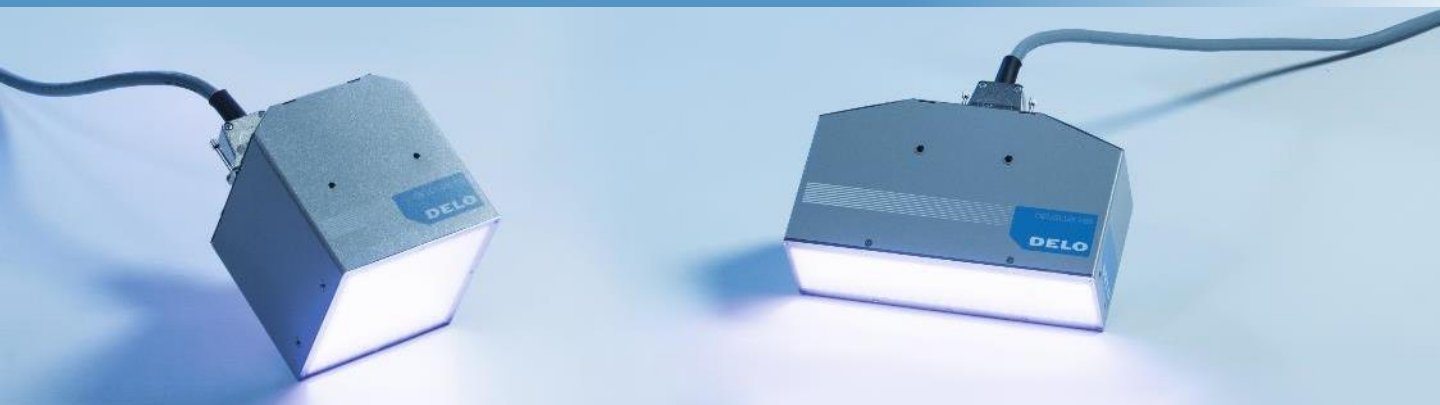


# DELOLUX 20 / 202



## LED lamps for evenly cured bonding areas

DELOLUX 20 and DELOLUX 202 area lamps distribute light evenly so that laminar adhesive layers cure within seconds. Our LED area lamps can be adapted to individual production conditions and flexibly integrated into fully automated production lines.

### Technical data

Description	High-intensity area lamp for evenly irradiated bonding areas
Lamp head dimensions	DELOLUX 20 A1 / A2: 112 mm × 112 mm × 121 mm DELOLUX 20 A4: 112 mm × 112 mm × 180 mm DELOLUX 202 A1 / A2: 209 mm × 67 mm × 121 mm DELOLUX 202 A4: 209 mm × 67 mm × 180 mm
Light exit area	DELOLUX 20: 100 mm × 100 mm DELOLUX 202: 202 mm × 49 mm
Wavelength / typical intensity	365 nm (A1): ≥ 600 mW/cm <sup>2</sup> @ 2 mm 365 nm (A2): ≥ 1,200 mW/cm <sup>2</sup> @ 2 mm 365 nm (A4): ≥ 2,400 mW/cm <sup>2</sup> @ 2 mm 400 nm (A1): ≥ 1,000 mW/cm <sup>2</sup> @ 2 mm 400 nm (A2): ≥ 2,000 mW/cm <sup>2</sup> @ 2 mm 400 nm (A4): ≥ 4.000 mW/cm <sup>2</sup> @ 2 mm 460 nm (A1): ≥ 800 mW/cm <sup>2</sup> @ 2 mm 460 nm (A2): ≥ 1,600 mW/cm <sup>2</sup> @ 2 mm Mixed wave length 365 & 400 nm (A4): ≥ 1,200 mW/cm <sup>2</sup> (365); ≥ 2,000 mW/cm <sup>2</sup> (400) @ 2 mm
Cooling mechanism	Active air cooling
Control	DELOLUX pilot and optional downstream PLC
Safety	Intensity measured with DELOLUXcontrol
Product compatibility	DELOLUX pilot A series

